

**Lau, Kenny**

---

**From:** Ethan Ahlberg [ethan.ahlberg@NollandTam.com]  
**Sent:** Wednesday, May 02, 2012 4:18 PM  
**To:** Lau, Kenny  
**Subject:** Oakland Zoo California - Interpretive Center - Design Modifications

<<ZCA - Scheme 1.pdf>> <<ZCA - Scheme 2.pdf>> <<ZCA-Scheme 1-Site Section.pdf>>

Hi Kenny,

To follow up on the phone message I left you, please find the attached 2 schemes and site section. The zoo is looking to relocate what was going to be the 2<sup>nd</sup> Phase of the building across the road (due to the potential to fund this as part of the first phase)

The two schemes look at how this re-design might take shape. Scheme 1 relocates the gondola at 1<sup>st</sup> level out from underneath the restaurant. This allows us to lower the majority of that building by up to 7 feet, saving a substantial amount of money on fill costs. The site sections shows this jogged relationship between the gondola space and the rest of the building (note that we're now just locating an exterior roof deck over the gondola, rather than any interior space as shown on the section)

The question of note with this diagram is if we can continue to utilize the horizontal separation strategy to building the restaurant as Type IIIB? (given we will have a 7' tall jog in this separation)

For BOTH schemes we would like to access whether we can continue to leave the stair as shown as an exterior stair.

Thank you for taking a look at this, please don't hesitate to call with any questions! As always we're happy to swing down to meet in person if required.

Regards,

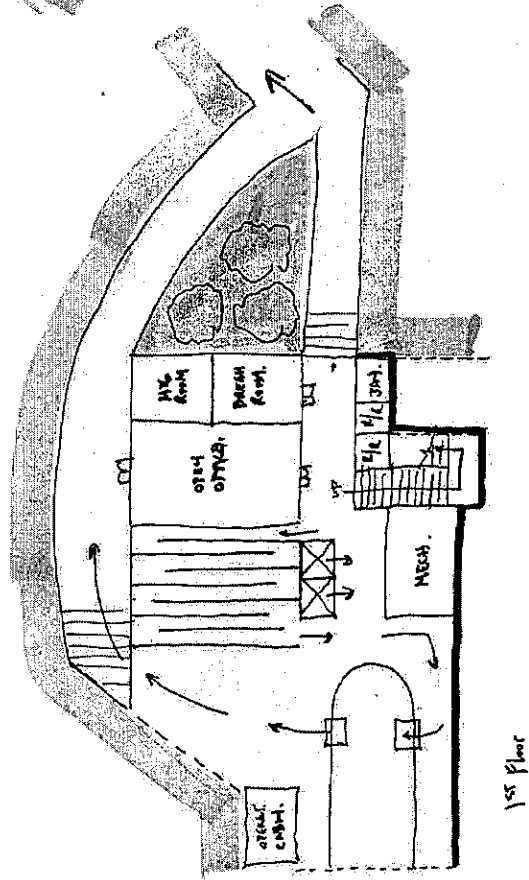
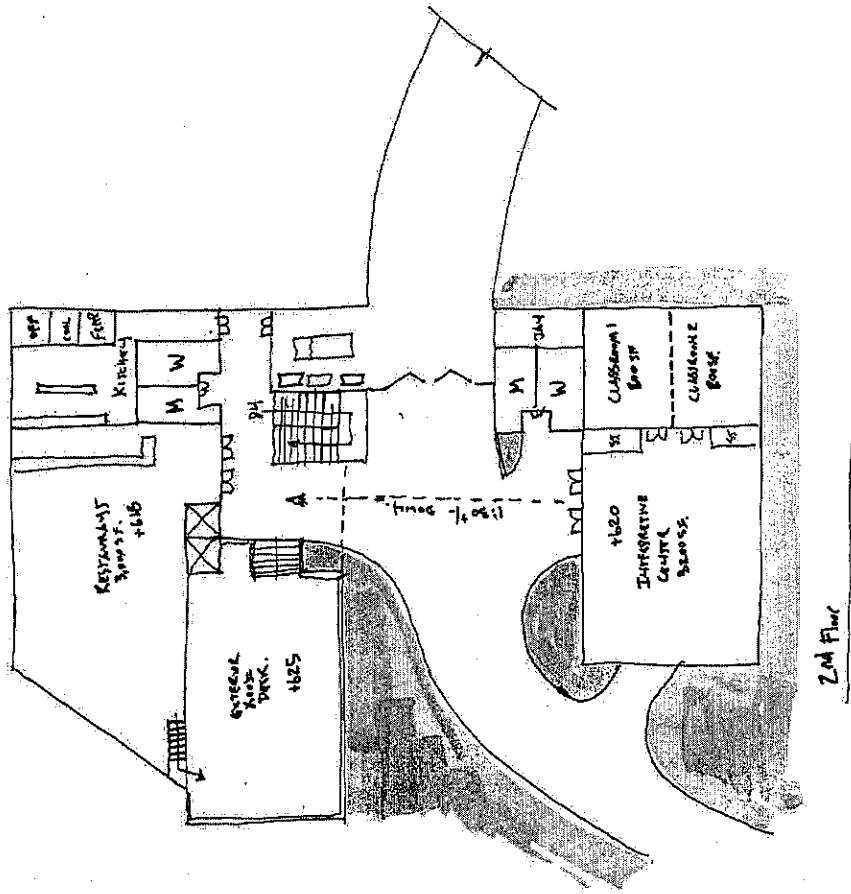
Ethan Ahlberg  
Architect

**Noll & Tam Architects**  
Committed to the 2030 Challenge

729 Heinz Ave. #7  
Berkeley, CA 94710  
t 510.542.2223 (Direct)

T 510.542.2200 (Main)  
f 510.542.2201  
[ethan.ahlberg@nollandtam.com](mailto:ethan.ahlberg@nollandtam.com)  
[www.nollandtam.com](http://www.nollandtam.com) map

12/18/2012



Scheme 1

